


## Mouse CCL3 Protein, His tag (Animal-Free)

Cat #: PRP1193

Size: 5 µg/20 µg/100 µg/1 mg

### Product Information

	<b>Product Name:</b> Mouse CCL3 Protein, His tag (Animal-Free)		
<b>REF</b>	<b>Catalog Number:</b> PR1193	<b>LOT</b>	<b>Lot Number:</b> Refer to product label
	<b>Purity:</b> > 98% as determined by SDS-PAGE		
	<b>Storage:</b> Store at -20°C		<b>Preparation method:</b> E.coli
	<b>Shipping:</b> The product is shipped at ambient temperature.		

**Background:** C-C Motif Chemokine Ligand 3 (CCL3) also known as macrophage inflammatory protein 1-alpha (MIP-1-alpha), is expressed in the spleen, lung, and articular cartilage. Upon binding to the receptor, CCR1, CCR4, or CCR5, CCL3 plays a vital role in immune response, such as inflammation, recruitment of immune cells, and production of IL-1 $\beta$  and TNF. In addition, CCL3 also participates in resistance to type 1 virus infection, astrocyte cell migration, regulation of macromolecule metabolic process, and regulation of ERK1 and ERK2 cascade.

**Sequence:** Amino acid sequence derived from Mouse CCL3 (Ala24-ALA92) (P10855) was expressed with 6xHis tag at the N-terminus.

**Protein length:** The recombinant Mouse CCL3 consists of 69 amino acids and predicts a molecular mass of 8.69 kDa.

**Biological Activity:** Measured by its ability to chemoattract human PBMCs using a concentration range of 10.0 - 100.0 ng/mL. Note: Results may vary from different PBMC donors.

**Endotoxin:** < 0.1 EU per 1 µg of the protein by the LAL method.

**Formulation:** Lyophilized from PBS, pH 8.0.

**Storage Instructions:** Lyophilized protein product should be stored desiccated below -18°C. Upon reconstitution, the protein should be stored at 4°C between 2-7 days and for future use below -18°C. For long term storage it is recommended to add a carrier protein (5% HSA, 10%FBS or 0.1%BSA). Please prevent freeze-thaw cycles.

**Usage notes:** Always centrifuge tubes before opening. It is recommended to reconstitute the lyophilized recombinant protein to a concentration not less than 100 µg/mL using the buffer we provided, and keep at room temperature for at least 20 min to

fully dissolve. Please avoid vortex vigorously.

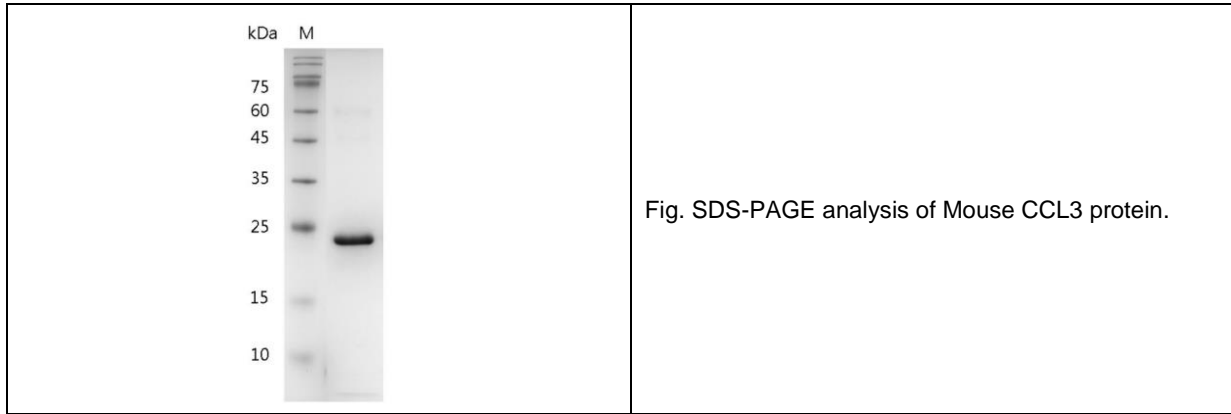


Fig. SDS-PAGE analysis of Mouse CCL3 protein.

**Note:** The product listed herein is for research use only and is not intended for use in human or clinical diagnosis. Suggested applications of our products are not recommendations to use our products in violation of any patent or as a license. We cannot be responsible for patent infringements or other violations that may occur with the use of this product.